

Four-Post Lift Family

High-Capacity Open- and Closed-Front Alignment Racks

NEW!



HUNTER
Engineering Company

L441 Four-Post Lift

Easily and safely service vehicles up to 18,000 lbs.

EXCLUSIVE

STANDARD

EXCLUSIVE

Louvered Ramps



- ✓ Prevent wheel spin.
- ✓ More effective than diamond tread or abrasive strips.

STANDARD

Flush Slipplates



- ✓ Wheelbases up to 158".
- ✓ Tethered pins secure plates on basic models.

EXCLUSIVE

Two Movable Work Steps



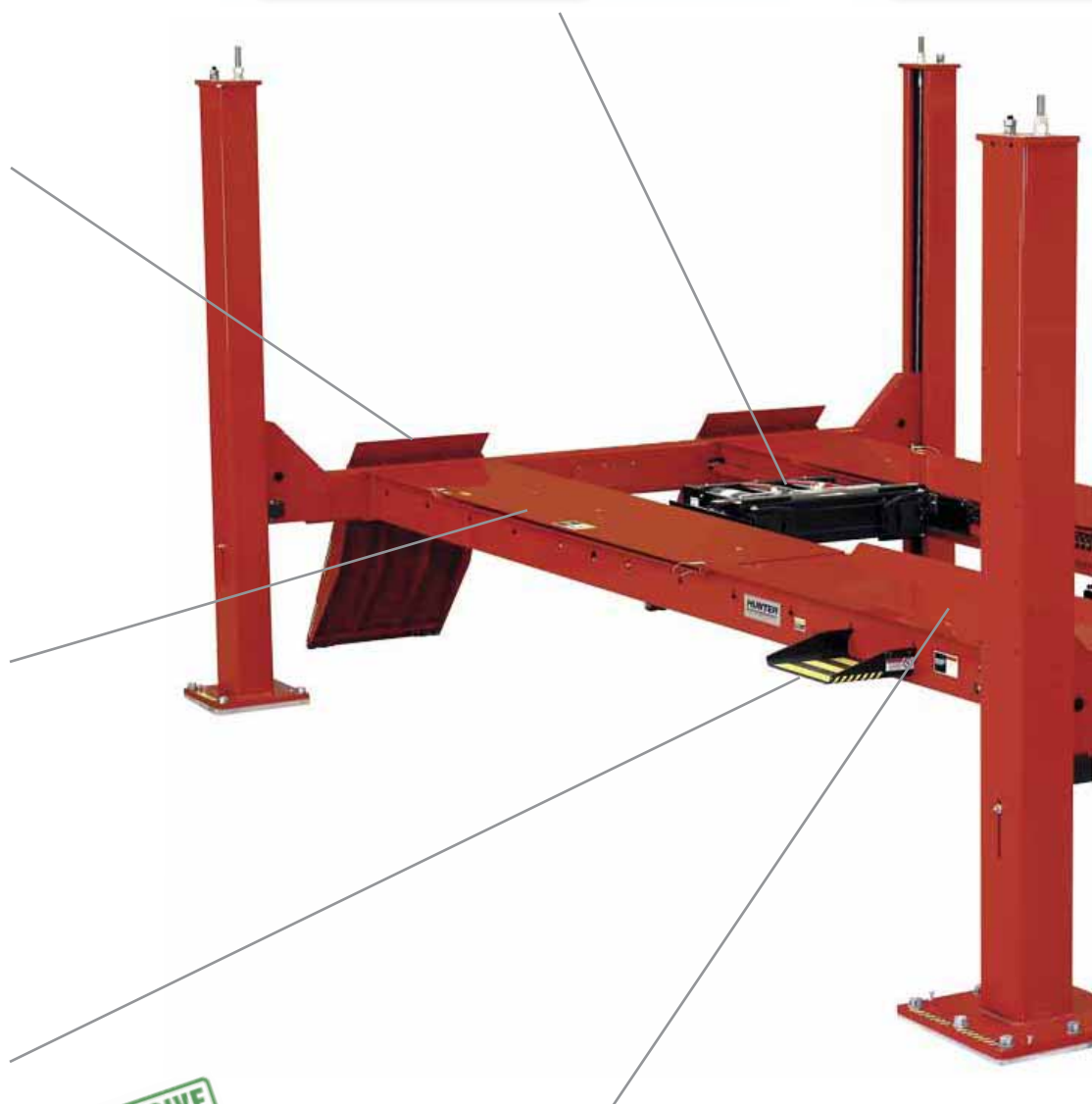
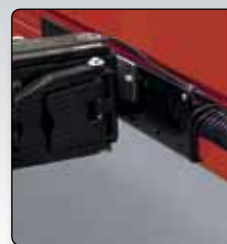
- ✓ 12 secure positions.
- ✓ Lightweight design.

Two Swing Air Jacks



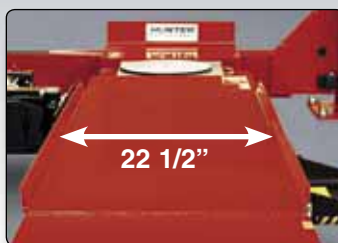
- ✓ Lift vehicles off the runways.
- ✓ 9,000-lb. capacity.

Integrated Air Lift



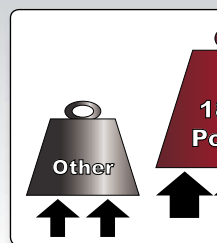
EXCLUSIVE

Extra-Wide Runways



- ✓ 22 1/2" runways accept wide vehicles.
- ✓ Rub rails enhance drive-on safety.

18,000-lb. Capacity



Line Kit



- ✓ Convenient power for air tools at front and rear.

EXCLUSIVE

Louvered Locks



- ✓ Ensure runways are level at all 16 lock heights.
- ✓ Galvanized cables for long life.

EXCLUSIVE

Power Unit



- ✓ Powerful 3-hp motor.
- ✓ Valve-controlled descent.
- ✓ Filter/lubricator standard.

Pins and Pulleys



- ✓ Large diameter iron pulleys with teflon bearings ensure long life.
- ✓ Chrome-plated pins.

EXCLUSIVE

Umbilical Covering



- ✓ Strong and flexible.
- ✓ Protects air and hydraulic lines from damage.

Capacity

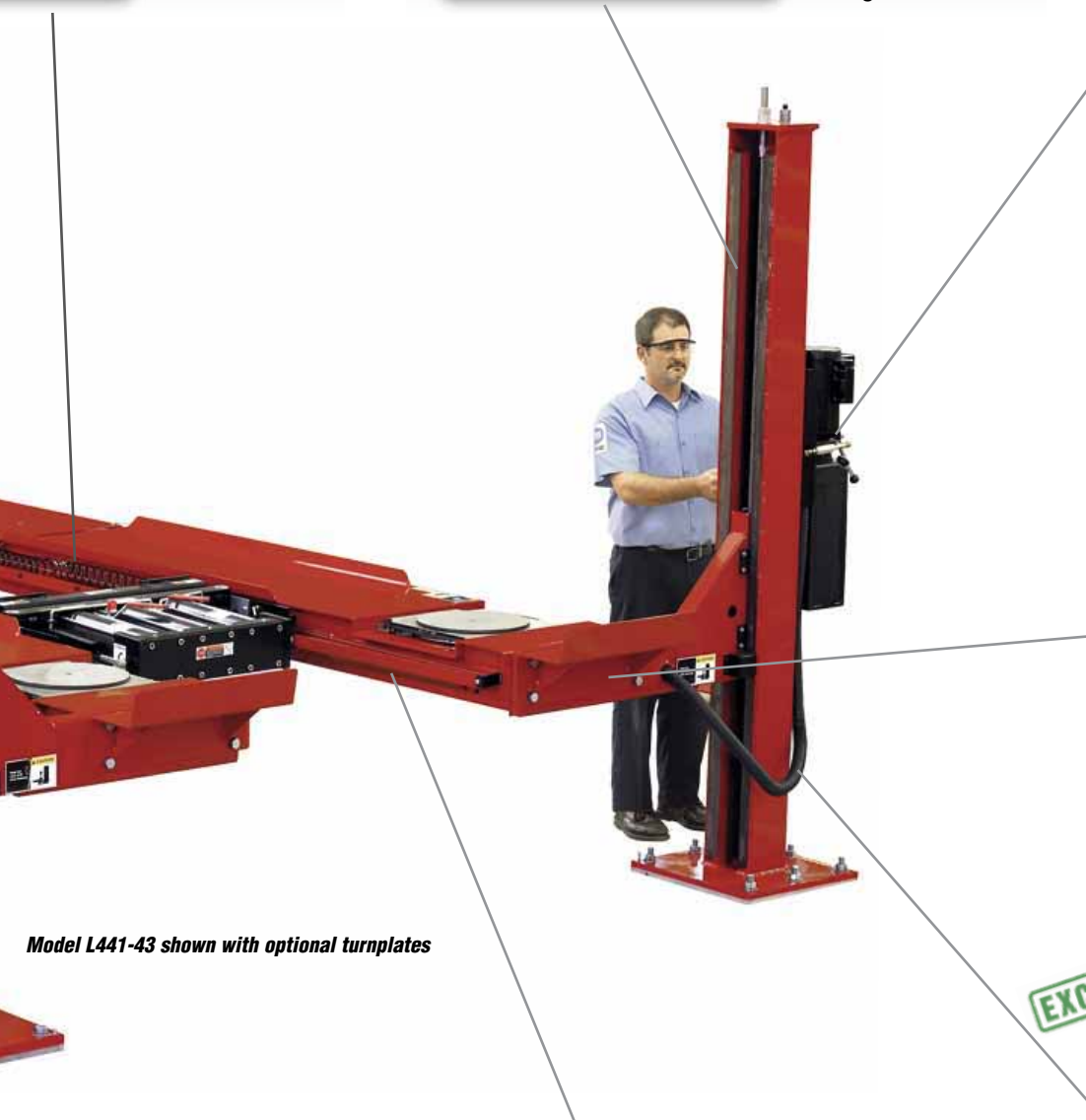


- ✓ Best in class!

Open Front



- ✓ Allows easy access to adjustment points and jacks.



Model L441-43 shown with optional turnplates

NEW!

PowerSlide® Edition Saves Time and Hassle!



EXCLUSIVE

PowerSlide® Locking System



Model L441-PS shown



PowerSlide® Control

One switch locks or unlocks the slipplates and optional turnplates.



PowerSlide® Locking System

Secure slipplates with a simple switch. The technician no longer has to struggle to remove and replace slipplate pins for every alignment.

PATENTED

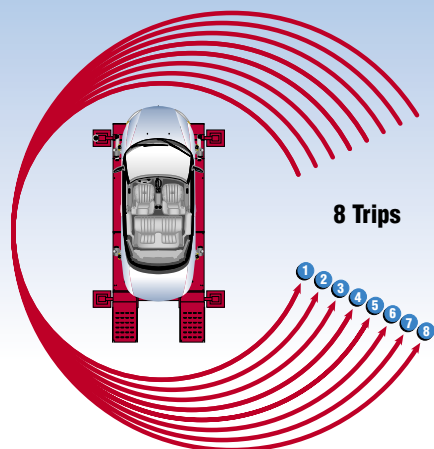


Optional PowerSlide® Turnplates

Save time by eliminating struggle with turnplate pins.

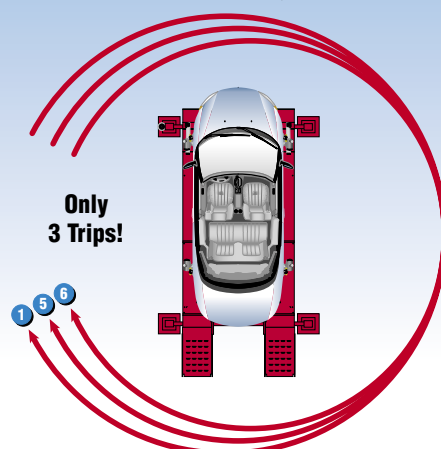
Trips Around the Car with PowerSlide®

Yesterday's Technology



8 Trips

VS.



Only
3 Trips!

- 1 Mount Targets
- 2 Jack Vehicle and Compensate Sensors
- 3 Lower Leveling Legs (if equipped)
- 4 Remove Slipplate and Turnplate Pins
- 5 Make Adjustments
- 6 Remove Targets
- 7 Replace Slipplate and Turnplate Pins
- 8 Raise Leveling Legs (if equipped)

Models L441-PS, L444-PS

NEW!

FIA/Inflation Station Edition Maximizes Productivity!

FIA Fully Integrated
Alignment

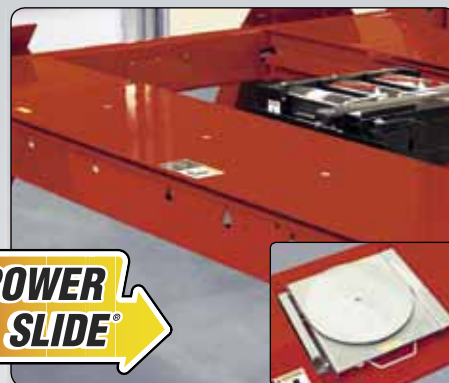
PATENTED

Fully Integrated Alignment with Inflation Station and PowerSlide®



FIA Console

Automatically controls
PowerSlide and Inflation
Station features.



Automatic Locking

Turnplates and slipplates lock
and unlock at the right time.

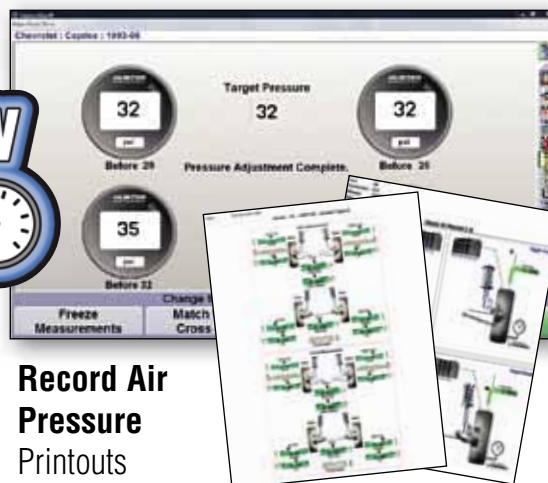


**WinAlign® software can
control all FIA features.***



Integrated Inflation Reels

Automatically fills or bleeds each tire.



Record Air Pressure

Printouts
record starting
and final pressure.

Models L441-IS, L444-IS

* Alignment console sold separately.

Two Swing Air Jacks

Hunter Swing Air Jacks add capabilities for lifting vehicles off the runways during alignment procedures and other multi-service operations.

The Heavy-Duty Swing Air Jack has a capacity of 9,000 lbs. (4,082 kg). Swing Jacks combine low drive-on height with high lift capacity.

133-83-1 – 9,000-lb. Capacity Swing Air Jack



Optional AlignLights Accessory

Hunter's AlignLights lighting accessory provides an efficient light source underneath the vehicle.

AlignLights are powered by the main lift power source and require no additional or exposed electrical cords.

For Four-Posts: 20-2377-1



Turnplates

All L441 and L444 models use 50mm turnplate pockets. One of these turnplates must be used with L441 or L444.

20-2076-1 PowerSlide Turnplates with Automatic Bridges

Stainless steel turnplates for camera-sensor-based systems. (2 req.)

20-2075-1 PowerSlide Turnplates without Automatic Bridges

Stainless steel turnplates for conventional sensors. (2 req.)

20-2114-1 50mm Stainless Steel Turnplate Kit

Includes two stainless 50mm delrin ball turnplates, 50 mm turnplate bridge and bolt-on guide strips.

20-2113-1 50mm Low-Friction Stainless Turnplate Kit

Includes two stainless 50mm torlon ball turnplates, 50 mm turnplate bridge and bolt-on guide strips.



Integrated bridge lowers and raises as plates are locked, making rolling compensation a snap. Air-operated control system ties directly into PowerSlide lifts.

L441 Specifications

Max. vehicle weight	18,000 lbs. (8164 kg)
Max. wheelbase	
General service	193" (4902 mm)
2-wheel alignment	177" (4496 mm)
4-wheel alignment	158" (4013 mm)
Min. 4-wheel alignment	88" (2235 mm)
Max. lifting height	75" (1905 mm)
Alignment height	Any of 16 lock positions
Minimum height	8 3/4" (222.25 mm)
Overall height	98" (2489 mm)
Tread width	
Min. inside	40" (1016 mm)
Max. outside	85" (2159 mm)
Motor	3 hp, 208-230 VAC, 60 Hz, 1 ph
Air	80-125 psi

Models

L441-43	L441 w/ (2) 9,000 lb. Swing Air Jacks
L441-PS	L441 w/ (2) Jacks and PowerSlide slipplates
L441-IS	L441 w/ (2) Jacks, PowerSlide slipplates and Inflation Station
L441	Open-Front, 18,000-lb. 4-post w/out Jacks

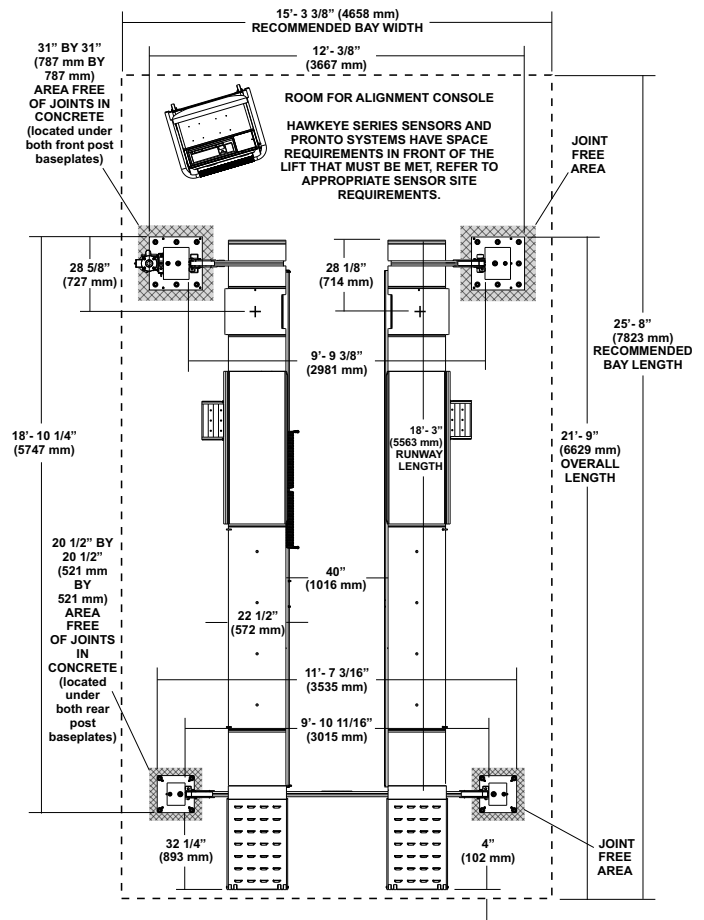
Standard Equipment

Two gusseted and louvered approach ramps
 Two rear ramp stops
 Two front wheel stops
 Two wheel chocks
 Two clip-on work steps with skid protection
 Built-in, full-length jack rails
 80" (2032 mm) flush-mounted rear slipplates
 Built-in rub rails
 Built-in 50mm turnplate pockets
 Built-in air line kit
 Pre-drilled for communications interface kit
 Lubricator/air filter with auto-drain

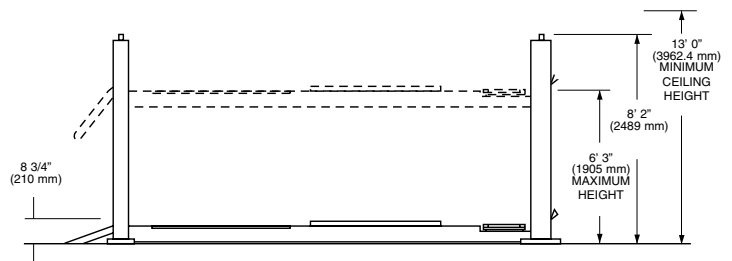
Options

20-1365-1	17.5" Ramp Extension Kit (for low clearance vehicles)
20-2033-1	40" Ramp Extension Kit (for extremely low clearance vehicles or high floor slope situation)
20-2340-1	FIA console adds IS and FIA to already PS equipped rack
133-83-1	9,000-lb. (3175 kg) capacity Swing Air Jack

L441 Plan View



L441 and L444 Elevation View



The Hunter L441 Lift has been certified under the program conducted by Automotive Lift Institute (ALI) and ETL Testing Laboratories, to comply with Safety Standard ANSI/ALI ALCTV-2006 and Electrical Standard ANSI/UL 201.

Because of continuing technological advances, specifications, models and options are subject to change without notice.

L444 Specifications

Max. vehicle weight	18,000 lbs. (8164 kg)
Max. wheelbase	
General service	227" (5766 mm)
2-wheel alignment	211" (5359 mm)
4-wheel alignment	158" (4013 mm)
Min. 4-wheel alignment	88" (2235 mm)
Max. lifting height	75" (1905 mm)
Alignment height	Any of 16 lock positions
Minimum height	8 3/4" (222 mm)
Overall height	98" (2489 mm)
Tread width	
Min. inside	40" (1016 mm)
Max. outside	85" (2159 mm)
Motor	3 hp, 208-230 VAC, 60 Hz, 1 ph
Air	80 - 125 psi



Models

- L444-43** L444 w/ (2) 9,000-lb. Swing Jacks
- L444-PS** L444 w/ (2) Jacks and PowerSlide slipplates
- L444-IS** L444 w/ (2) Jacks, PowerSlide slipplates and Inflation Station
- L444** Closed-Front, 18,000-lb. 4-post w/out Jacks

Standard Equipment

Identical to L441 Lift Rack.

Options

Identical to L441 Lift Rack.



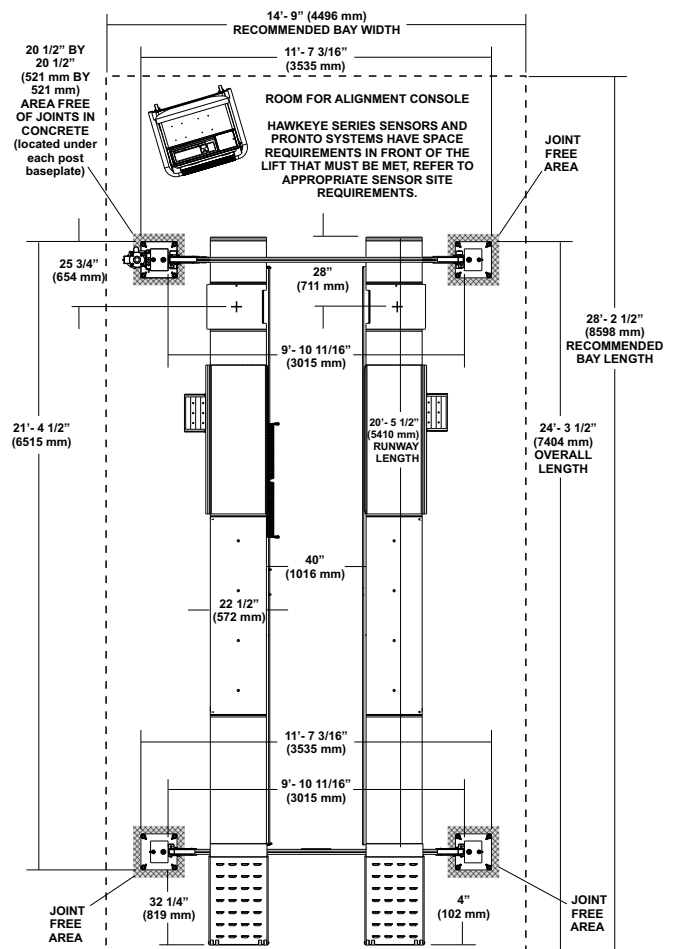
The Hunter L444 Lift has been certified under the program conducted by Automotive Lift Institute (ALI) and ETL Testing Laboratories, to comply with Safety Standard ANSI/ALI ALCTV-2006 and Electrical Standard ANSI/UL 201.

Because of continuing technological advances, specifications, models and options are subject to change without notice.

Be sure to check out other Hunter literature for more quality products from Hunter Engineering.



L444 Plan View*



* See Previous Page for Elevation View

HUNTER
Engineering Company

www.Hunter.com



Mixed Sources
Product group from well-managed forests and other controlled sources
www.fsc.org Cert no. SW-COC-002105
© 1996 Forest Stewardship Council

Form 6020-T, 08/09
Supersedes 6020-T, 07/09