



VAS 6292 Wheel Alignment System

Customized for Aligning all Volkswagen and Audi Vehicles

***Volkswagen A.G.-Approved
Hunter Performance Features
Save Time and Effort...***




asanetwork
Supports ASA-Network
Integration and ELSA



VAS 6292 Wheel Alignment System

Approved Equipment for all Audi and Volkswagen Workshops

Hunter has designed the VAS 6292 Wheel Alignment System to meet the specific requirements of V.A.G workshops and provide superior, high-precision alignments on all cars and light commercial vehicles. Radar sensor adjustment procedures are built into the customized alignment procedure for vehicles equipped with Automatic Distance Regulation (ADR), Automatic Cruise Control (ACC) Lane Departure Warning (LDW) and Dynamic Steering.

■ **Customized Alignment Software**

The customized WinAlign® Alignment Software guides the V.A.G technician through a simple, one-key, vehicle-specific measurement and adjustment process with step-by-step on-screen instructions and clear, concise graphics. The work sequence is so flexible that it is also possible to move to another part of the program at any time.

■ **Audi A8, VW Phaeton and VW Touareg Support**

Hunter's customized WinAlign Alignment Software includes new alignment procedural steps necessary for proper wheel alignments on the Audi A5, A8, & Q7 and VW Phaeton & Touareg.

■ **ELSA/ASA Support**

The VAS 6292 Wheel Alignment System has the ability to run multiple programs concurrently and the capability to be networked to shop management and information systems on the Internet. This system supports ASA-Network Integration and ELSA, which are important building blocks for future V.A.G workshop networking.



**High-Speed
Rolling Compensation
Helps Your Shop
Complete More
Alignments Per Day**

**Complies With All
Adjustment Requirements
of the Audi A5, A8, & Q7,
and VW Phaeton
& Touareg**



Obtain Measurement Data Faster Than Conventional Sensors

Step 1

- Mount alignment targets

Step 2

- Roll vehicle back until on-screen indicators turn green

Step 3

- Roll vehicle forward and stop on center of turnplate

Step 4

- All front and rear camber and toe measurements are immediately displayed



HawkEye VAS 6292 Imaging Sensors Speed Service

Hunter digital imaging alignment sensors use **multi-dimensional** modeling to provide accurate alignment measurements. The operator can use either live plane mode, which uses the targets as a reference plane **or** the traditional alignment mode, which uses the rack runways as a reference plane.

High-resolution digital cameras continuously measure wheel target position and orientation, providing the same alignment measurements as conventional sensors.

VAS 6292 Wheel Alignment System Offers:

Speed

- Mount targets
 - Roll the vehicle to compensate
 - View measurements
- It's that quick!

Durability / Low Long-Term Cost of Ownership

- No electronics at the wheel; no electronic circuitry to damage if targets are dropped
- No moving parts and virtually no maintenance
- No electronic turnplates required to measure maximum steering angle

Ease of Use

- Wide field of view
- Vehicle can be raised to a comfortable working height for adjustment
- No cables or electronic signals between the targets and the console
- Maximum steering angle is measured directly
- Uses Hunter's award-winning WinAlign® Software



Lightweight durable targets are easy to install.



Sensor Targets have no cables and require no calibration.

WinAlign® Software is Designed to Speed Alignments and Maximize Your Profits

WinAlign® Alignment Software contains the largest vehicle specific information database in the industry as well as many patented adjustment, productivity and merchandising features to assist when servicing other brands of vehicles.

New technology-based features that speed and simplify the alignment process are what make WinAlign® Software the most capable and powerful alignment system software available today.

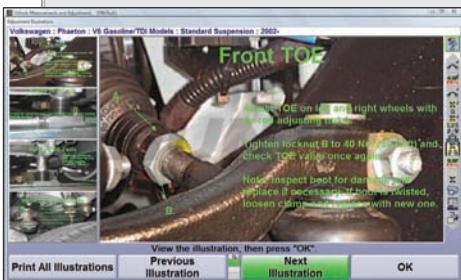
WinAlign® Software Offers Patented and Exclusive Features for:

- Vehicle Measurement and Adjustment
- Vehicle Inspection
- Merchandising
- Training
- Hunter Online Features
- WebSpecs.NET
- ShopResults.NET
- UnderCarInfo.NET

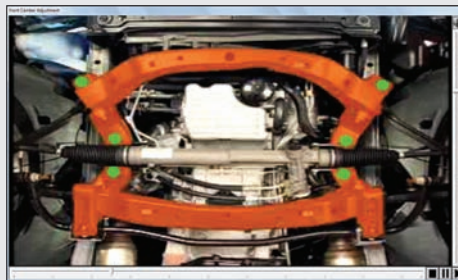
	Left	Right
Front		
Camber	0°12'	0°40'
Cross Camber	-0°29'	7°34'
Caster	7°34'	7°34'
Cross Caster	0°00'	0°00'
SAI	0°00'	0°00'
Cross SAI	0°00'	0°00'
Toe	-0°02'	-0°02'
Total Toe	-0°04'	-0°04'
Rear		
Camber	-1°24'	-1°21'
Cross Camber	-0°03'	0°02'
Toe	0°00'	0°03'
Thrust Angle	-0°01'	

The V.A.G customized WinAlign® Alignment Software provides easy-to-follow vehicle-specific procedures to simplify alignment service.

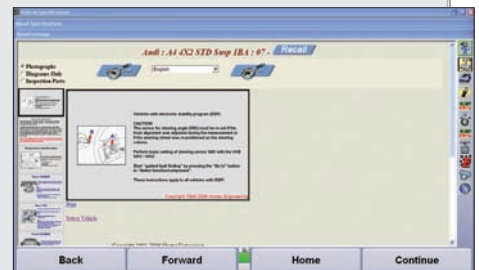
Additional Alignment “Power Features”



*Digital Photo** option displays digital photos of adjustment and inspection points specific to the vehicle being serviced.*



*Optional Digital Video** feature includes videos that show and explain the correct procedures specific to the vehicle being aligned.*



*WebSpecs® Specification Database** option lets technicians download recently released manufacturer's vehicle specifications, access adjustment illustrations and Digital Photo updates via the Internet.†*

CAMM[®] Feature Takes the Guesswork Out of VW Touareg Dual Cam, Camber and Caster Adjustment

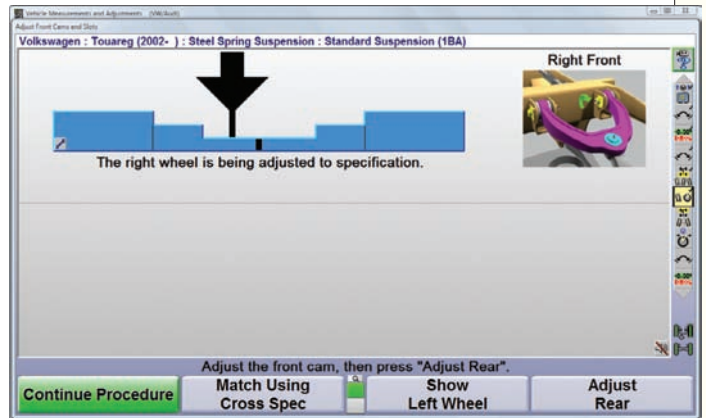
CAMM[®] (Control Arm Movement Monitor) tracks live caster and camber adjustments showing the technician exactly how much to move the front cam, then how much to move the rear. This feature can reduce camber and caster adjustment time by half or more.

An adjustment bar graph* is displayed along with a graphic of the control arm. The front cam is adjusted until the arrow is in the center of the bar graph. Then the rear cam is adjusted the same way.

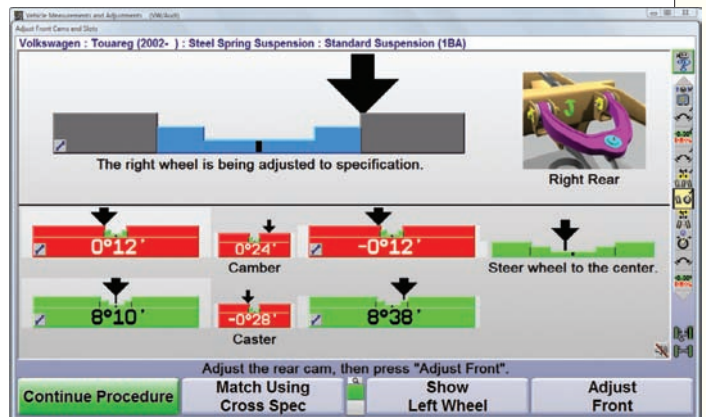
- Since CAMM computes the exact mechanical geometry of the vehicle, dual cam and dual slot adjustments can be made correctly the first time.
- The alignment technician can easily switch between front and rear control arm adjusters to fine-tune the adjustment.
- Current camber and caster measurements can be displayed for reference at operator's discretion.

Without CAMM, adjusting control arm camber and caster is trial and error!

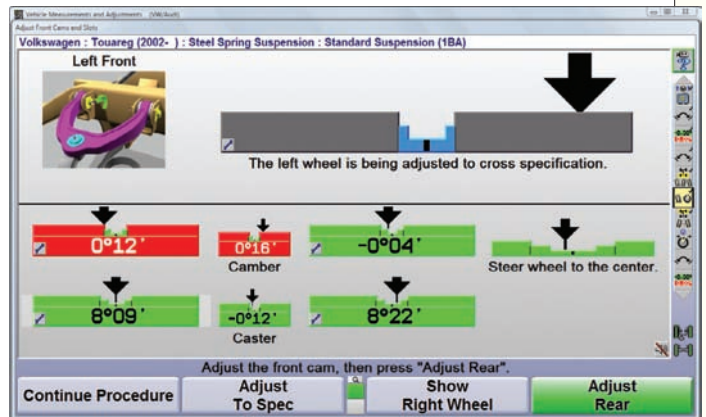
**ESTIMATED TIME SAVINGS:
7 MINUTES!**



Display for adjusting front slot on right side.



CAMM adjustments with camber and caster measurements displayed for reference.



Display for adjusting front slot on left side to match right side cross specification.

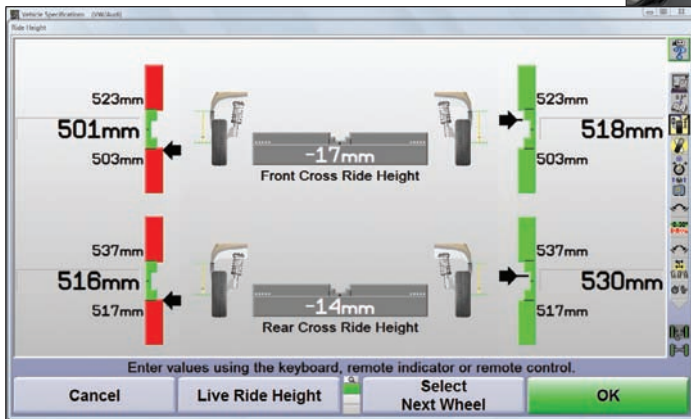
*Patented

Widescreen displays are only available with WA200 units

Exclusive Live Ride Height Feature Provides Exact Measurements in Seconds

**ESTIMATED TIME SAVINGS:
8 MINUTES!**

Hunter's Live Ride Height Measurement System reduces the amount of time it takes to measure and enter data by automating the exact procedures as specified by Volkswagen and Audi. Accurate to one millimeter, Ride Height instantly displays measurements and compares them to the vehicle manufacturer's specifications.

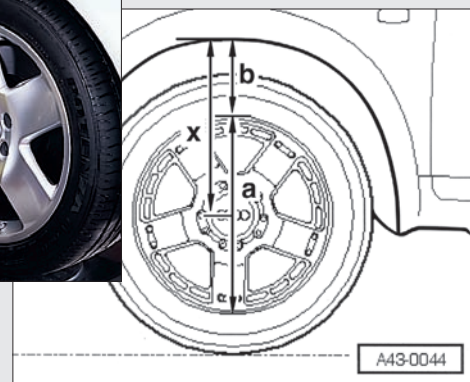


Ride height measurement results are color-coded. A completely green bar graph and wheel indicate that measurements are within specification. A red bar graph and wheel indicate an out-of-specification measurement.

IMPORTANT NOTE:
New Volkswagen and Audi models such as Touareg, Passat, Jetta, Golf, Phaeton and A8 (D3) require ride height to be measured.

Without Live Ride Height Measurement System, getting measurements is time consuming and prone to error!

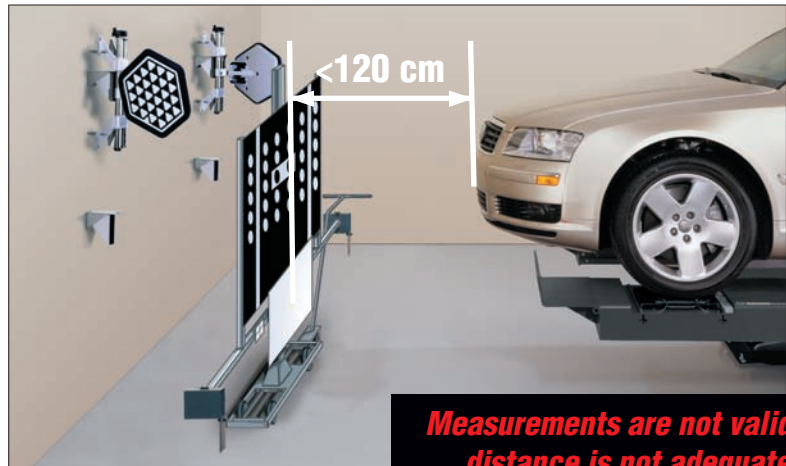
If your aligner is not equipped with Electronic Ride Height Measurement, all ride height measurements must be taken manually and entered manually. Multiple measurements are taken at each wheel. Manual calculations must then be made and results entered into the aligner using a keyboard.



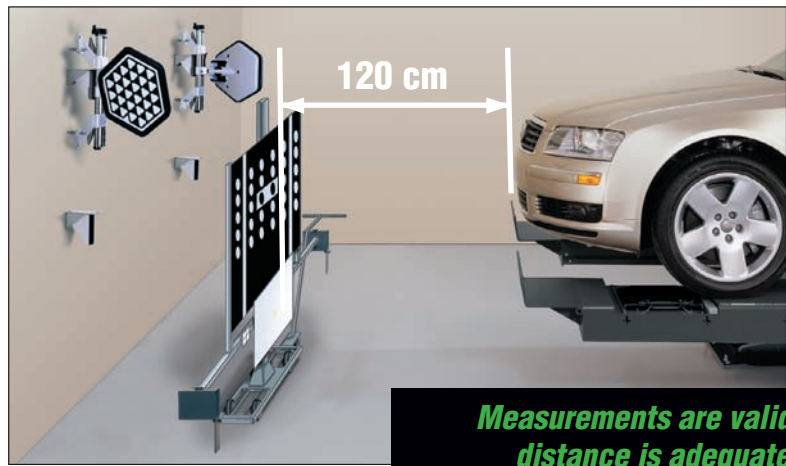
Continuous Compensation Makes ADR, ACC and LDW Calibration Faster and Easier

If your alignment bay is too short to accommodate the VAS 6430 calibration fixture, Hunter's VAS 6292 Alignment System offers a solution. If the bay or lift configuration allows, the vehicle can be rolled rearward on the lift/rack until the required distance is obtained.

Hunter's exclusive, continuous compensation capability allows the vehicle to be repositioned *without having to recompensate the sensors* and begin the alignment procedure over.



Measurements are not valid; distance is not adequate.



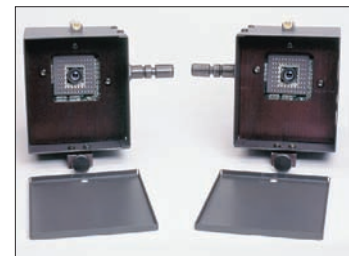
Measurements are valid; distance is adequate.

ESTIMATED TIME SAVINGS: 5 MINUTES!

ACC measurement procedure utilizing optional HS401 Wheel Alignment Sensors.

VAS 6430 ACC/LDW Fixture.

VAS 6430 available through your VW/AG equipment supplier.



Hunter radar alignment system kit Part # 20-1835-1. This is a mandatory tool.



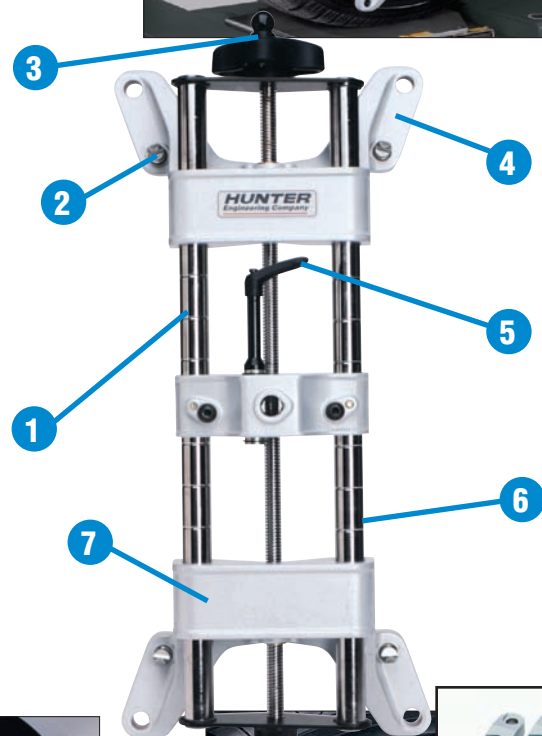
IMPORTANT NOTE:
V.A.G requires ADR or ACC calibration whenever vehicle alignment is adjusted.

Hunter Self-Centering Wheel Adaptors

Exclusive Easy to Use Features Provide Greater Versatility and Extra Durability

1. Extended range fits 10" to 24.5" (254 mm to 622 mm) rims.
2. Reversible adaptor rim studs provide adaptability for steel rims or specialty rims with Run-Flat and Flange-Guard tires.
3. Quick-Knob provides fast adjustment of the adaptor's range, allowing it to fit various rim sizes.
4. Adaptor's unique design is able to accommodate a wide variety of wheel configurations and sizes. Simply insert the rim studs into the appropriate slot according to the rim-size range needed.
5. Durable Lock-Knob is easy to access and securely locks the target to the wheel adaptor.
6. Lightweight, non-flexing adaptors are designed to provide rigidity and stability, yet are easy to handle.
7. Reinforced machined aluminum castings and hard-chromed support rods resist damage and corrosion.

Patented Alignment Targets remain centered while the technician clamps the adaptor to the rim.



Recommended Wheel Adaptor Options

20-1789-1 External Tire Clamp Adaptor shown with Self-Centering Wheel Adaptor

Clamps effectively fasten wheel adaptors on tires with an outside dimension of 21" (533 mm) to 40" (1016 mm). Grips onto tire treads and protects alloy wheels from damage.



20-1792-1 Self-Centering Wheel Adaptor Extensions

Extensions increase the Self-Centering Wheel Adaptor's maximum rim range from 24.5" (622 mm) to 28" (711 mm).

(Kit 20-1792-1 contains 16 pieces, 4 for each adaptor.)

VAS 6292 Console Options

Recommended VAS 6292 Equipment Package*

WinAlign WA200 Series with premium large cabinet and 20" (VAS 6292P) or 32" (VAS 6292PLCD) widescreen LCD monitor

Computer includes:

- Current WinAlign® Alignment Software
- Electronic Software Authorization Key for VAG software
- Two Years of VID Updates
- Two Years subscription to WebSpecs®
- Intel Core 2 Duo Processor - 1.86 GHz (or greater)
- 2 GB RAM
- 80.0 GB SATA (or minimum)
- Single DVD/CD-RW Drive
- USB 2.0
- Network Module
- Wireless Network Module
- Mouse
- Windows Vista Business
- Digital-Photo Option
- Digital-Video Option
- HP Color Printer
- Keyboard
- iShop™ and ASANet™ compatible

Standard Accessories:

- Handheld Wireless Remote Control
- Live Ride Height Targets (20-2050-1)
- Steering Wheel Holder
- Brake Pedal Depressor
- Select one of the following camera sensor types: WM, FM or PS
- Hexagonal targets
- Radar Alignment System Kit for ADR/ACC adjustment (20-1835-1)
- Stainless Steel Turnplates - low friction (20-1918-1) (two required)
- Kit to Modify VAG Alignment Tool to fit on Hunter alignment lifts (20-1194-1)



Basic Compliance VAS 6292 Equipment Package

WinAlign WA100 Series with large cabinet and 19" LCD monitor

Computer includes:

- Current WinAlign® Alignment Software
- Electronic Software Authorization Key for VAG software
- Two Years of VID Updates
- Intel Pentium Dual-Core Processor- 1.6 GHz (or greater)
- 1 GB RAM
- 80.0 GB SATA (or greater)
- Single DVD/CD-RW Drive
- USB 2.0
- Network Module
- Mouse
- Windows Vista Basic
- HP Color Printer
- Keyboard
- iShop™ and ASANet™ compatible

Standard Accessories:

- Handheld Wireless Remote Control
- Live Ride Height Targets (20-2050-1)
- Steering Wheel Holder
- Brake Pedal Depressor
- Select one of the following camera sensor types: WM, FM or PS
- Hexagonal targets
- Stainless Steel Turnplates - low friction (20-1918-1) (two required)
- Kit to Modify VAG Alignment Tool to Fit on Hunter alignment racks (20-1194-1)

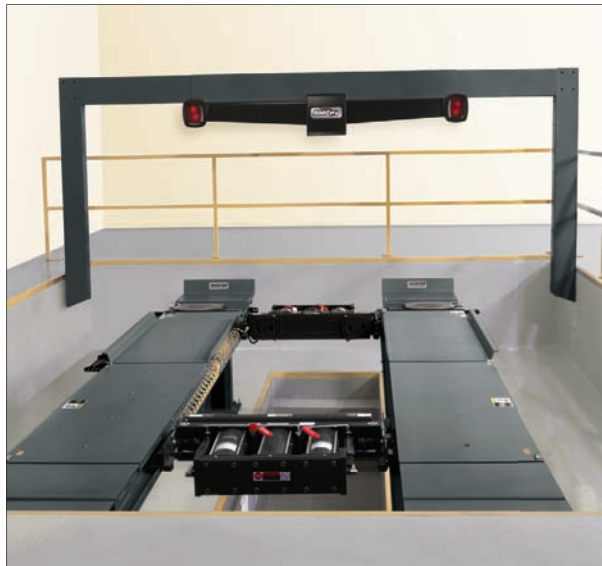
Approved HawkEye™ Sensor Configurations

HawkEye Sensors provide the same high-speed screen updates as conventional sensors. Four high-resolution digital video cameras (one per target) continuously

monitor targets at each wheel. Targets have no electronic circuitry to damage if dropped and require no calibration, making them virtually maintenance free.



The wall-mount HS401WMVAG is designed for straight or herringbone bay applications. This configuration is also easily adapted to mount from the ceiling.



The HS401PSVAG overhead camera configuration is suitable for pit applications. (Shown with optional alignment rack)



The HS401FMVAG floor-mounted overhead camera configuration is suitable for drive-through applications.

Lift Options



RX9-43-AU-V

Recommended Lift Groups

RX9L-43-AU-V

Extended RX Scissor Lift with (2) swing air jacks.

RX9-43-AU-V

RX Scissor Lift with (2) swing air jacks.

RX9L-PS-AU

Extended PowerSlide RX Scissor Lift with (2) swing air jacks.

Lift Groups for Flush Mount Applications

RX9L-43-AU-V-P

Extended RX Scissor Lift for flush mount application with (2) swing air jacks.

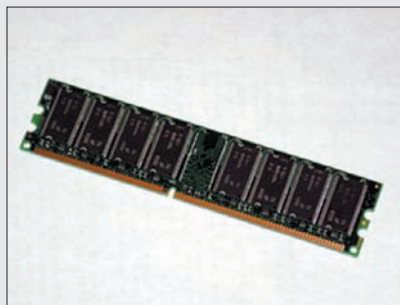
RX9-43-AU-V-P

RX Scissor Lift for flush mount application with (2) swing air jacks.

RX9L-PS-P-AU

Extended PowerSlide RX Scissor Lift for flush mount application with (2) swing air jacks.

Recommended Options



20-2211-1 Memory Upgrade Kit
increases RAM by 1GB



20-1761-1 Digital Photo/Video Kit



30-419-1 Icon Remote Indicator

WinAlign® Alignment Software upgrades may require additional and/or upgraded hardware. Because of continuing technological advancements, specifications, models and options are subject to change without notice.



asanetwork

**Supports ASA-Network
Integration and ELSA**



Visit our Web site at www.hunter.com

HUNTER
Engineering Company

11250 Hunter Drive, Bridgeton, MO 63044
800-448-6848 • 314-731-3020 • FAX: 314-731-1776